

**DENTAL PRODUCTS**



DENTAL PRODUCTS

GERMAN QUALITY FOR DENTISTRY

# INTRODUCTION

The company **MEGA-PHYSIK** GmbH & Co. KG was founded in 1970 in Rastatt, Baden-Württemberg..

Since then **MEGA-PHYSIK** has been a synonym for development and innovation in the production of high-quality dental curing light units which are worldwide applied in the dentistry.

As a medium-sized, owner-operated company, the staff of **MEGA-PHYSIK** are at the customers' disposal with competent and friendly advice.

In 1999 a further company for dental material was built in Radeberg, Saxony, and since then both, **MEGA-PHYSIK** dental curing light systems have been sold by our business partners and dental materials has been successfully used by dentists in more than 50 countries in the world.

The certification of the quality assurance system according to EN ISO 9001:2000 and DIN EN ISO 13485:2003 for the registration of the production of medical products, continuously guarantees the high-quality level of the products manufactured by **MEGA-PHYSIK**.



DENTAL PRODUCTS

GERMAN QUALITY FOR DENTISTRY

# TABLE OF CONTENTS

## Practice Solutions

FILLING MATERIALS	Page	LIGHT CURING UNIT	Page
HYBRISUN Overview	04	CROMALUX 75	25
HYBRISUN ceram / ceram flow	05	CROMALUX 75 economic	26
HYBRISUN classic / classic flow	07	CROMALUX E plus	26
HYBRISUN nano / nano flow	09	MEGALUX soft-start	27
HABRISUN aesthetic / aesthetic flow	11	MEGALUX soft-start R	27
HYBRISUN molar	13	MEGALUX fast-cure	28
HYBRISUN MF	14	CROMATEST	28
HYBRISUN-T	14	Accessories, Spare parts	29
MEGACEM aquaset	15	Eye protection	30
MEGACEM powder/liquid	15	CROMALUX-LED multi-wave	31
<b>ADHESIVE SYSTEMS</b>		CROMALUX-LED fast-cure	31
C-Cid, C-Bond, N-Bond, C-Prime-S plus	16	CROMALUX-LED ortho 3000	32
C-Bond ceram, C-Prime-SE	17	CROMALUX-LED 1200	32
Kerasil, C-Fluorine	17	CROMALUX-LED UVA	32
<b>CEMENTS</b>			
MEGAFIX aquaset, MEGAFIX powder/liquid	18		
C-CEMENT flow	18		

## Laboratory Solutions

TRAY MATERIAL	Page	LIGHT CURING UNIT	Page
MP-TRAY custom tray materials,	19	DENTALUX-4	33
MP-TRAY base plates	19	DENTALUX-2	33
<b>DENTURE BASE MATERIALS</b>		DENTALUX-4 fast-cure	34
LICRYL-Press, LICRYL-Cast	21	DENTALUX-2 fast-cure	34
LICRYL-Repair, LISEAL ULC, LISEAL NLC	22		
<b>MODELING RESIN</b>			
LIMOD-P/L, LIMOD-LC, LIMOD-LC flow	23		
<b>AUXILIARIES</b>			
LISOL, LICLEAN, LIFIN, LIANTIWAX	24		





# FILLING MATERIALS



DENTAL PRODUCTS

GERMAN QUALITY FOR DENTISTRY

# FILLING MATERIALS



## HYBRISUN ceram

**HYBRISUN ceram** is a universal light curing Microhybrid Composite with special modified Micro-glass filler combination for restorations in the anterior- and posterior tooth area. The microstructure of several Micro-glass filler of HYBRISUN ceram, based on experience in nanotechnology, ensure a higher filler content. This guarantee high colour stability of the final restoration and a lower shrinkage during polymerisation process. HYBRISUN ceram has a concise chameleon effect and natural opalescence. Through a wide variety of colours and usual processing properties HYBRISUN ceram is suited for the layering technique and aesthetic restorative treatment.

Single package:	Syringe 4,0 g; Minifill 250mg
Kit	(3 syringe) A2 / A3 / A3,5 / C-Bond ceram 5ml / C-Cid 3g / accessories
Kit	(4 syringe) A1 / A2 / A3 / A3,5 / C-Bond ceram 5ml / C-Cid 3g / access.
Kit	(6 syringe) A1 / A2 / A3 / A3,5 / B2 / D3 / C-Bond ceram 5ml / C-Cid 3g / access. (Shade combination at your discretion available on request)
Shades	Enamel: A1 / A2 / A3 / A3,5 / A4 / B1 / B2 / B3 / B4 / C1 / C2 / C3 / C4 / D2 / D3 / D4/ Incisal
	Dentin: A1 / A2 / A3 / A3,5 / B2 / D3



# FILLING MATERIALS



## HYBRISUN ceram *flow*

**HYBRISUN ceram flow** is a universal, flowable filling material. HYBRISUN ceram flow has a natural fluorescence and is used in the filling therapy for micro preparations and tooth neck defects, the expanded fissure occlusion, the fixation and repair of composite- and natural enamel restorations as well as to the placement of the first filling layer by composite restorations. The slightly thixotropic consistence prevents the dripping of HYBRISUNJ ceram flow and allows accurate application. The matrix with additional ceramic filler provide a low polymerization shrinkage and a high abrasion resistance of the final restoration. The balanced transparency and the combinability with filling materials, e.a. HYBRISUN ceram flow result in a wide range of application. HYBRISUN ceram flow is available in the most wanted basic shades.

Single package: Syringe 2,0 g;

Kit (4 syringe) A1 / A2 / A3 / A3,5 / C-Bond ceram 5ml / C-Cid 3g / access.  
(Shade combination at your discretion available on request)

Shades Enamel: A1 / A2 / A3 / A3,5 / B2 / B3  
Dentin: A2 / A3

# FILLING MATERIALS



## HYBRISUN classic

**HYBRISUN classic** is a universal light curing Microhybrid Composite for restorations in the anterior- and posterior tooth area. The continuous plastic consistency and large colour assortment allows excellent usability of the material and is well suited for the classic filling therapy and layer technique in filling structures. HYBRISUN classic can be polished to a high gloss and offers a highly aesthetic restoration. The fillers contain fine dental glass particles and highly dispersible silicone oxides, which are specifically treated and cover the surface with a hydrophobic layer. The surface of HYBRISUN classic is therefore resistant and protected from residue deposits and discolorations. HYBRISUN classic is X-ray-opaque and has a fluorescent effect like the natural tooth structure.

The homogeneous structure of the investments and the selected fillers guarantee the chameleon effect and natural opalescence. The high gloss polish capability insures a long colour retention and natural aesthetic of the restoration. The pleasant process paired with the outstanding characteristics and the universal applicability of HYBRISUN classic stand for a high quality and long lifetime of the restoration.

Single package: Syringe 4,0 g; Minifill 250mg

Kit (3 syringe) A2 / A3 / A3,5 / C-Bond 5ml / C-Cid 3g / accessories

Kit (4 syringe) A1 / A2 / A3 / A3,5 / C-Bond 5ml / C-Cid 3g / access.

Kit (6 syringe) A1 / A2 / A3 / A3,5 / B2 / D3 / C-Bond 5ml / C-Cid 3g / access.  
(Shade combination at your discretion available on request)

Shades Enamel: A1 / A2 / A3 / A3,5 / A4 / B1 / B2 / B3 / B4 / C1 / C2 / C3 / C4 / D2 /  
D3 / D4/ Incisal

Dentin: A1 / A2 / A3 / A3,5 / B2 / D3



# FILLING MATERIALS



## HYBRISUN classic flow

**HYBRISUN classic flow** is a flowable light curing Microhybrid Composite which is X-ray opaque. HYBRISUN classic flow has a natural fluorescence and is used in the filling therapy for micro preparations and tooth neck defects, the expanded fissure occlusion, the fixation and repair of composite- and enamel restorations as well as to the placement of the first filling layer by composite restorations.

The slightly thixotropic consistence prevents the dripping of HYBRISUN classic flow and allows accurate application. Therefore a high stability of the material is guaranteed. Measured transparency and the combinability with filler materials, e. a. HYBRISUN classic, permit an optimal range of application for HYBRISUN classic flow. Based on the matrix with micro-glass-filler HYBRISUN classic flow can be polished to a high gloss and rendering it abrasion resistant. HYBRISUN classic flow is available in the most popular basic shades.

Single package: Syringe 2,0 g

Kit (4 syringe) A1 / A2 / A3 / A3,5 / C-Bond 5ml / C-Cid 3g / access.  
(Shade combination at your discretion available on request)

Shades Enamel: A1 / A2 / A3 / A3,5 / B2 / B3  
Dentin: A2 / A3

# FILLING MATERIALS



## HYBRISUN nano

**HYBRISUN nano** is a light curing universal composite that combines the typical properties of a microhybride with the advantages of nanotechnology. The high content of inorganic fillers (>82 % by weight / 67 % by volume) and the even distribution of the microglass and the nanoparticles ensure low shrinkage (<1.9 % by volume) in light polymerisation. As a result, high dimensional stability and abrasion resistance are achieved in the finished restoration. The filling material is X-ray opaque and applicable for fillings of class I; II; III; IV e V, for composite inlays and veneering of discoloured teeth.

**HYBRISUN nano** shows a natural fluorescence in ultraviolet light. Hybrisun nano is not sticky to the instrument, has a constant plastic consistency and is slightly thixotropic. This allows a stressfree work in the anterior and posterior tooth area. An extensive range of shades in Enamel, Dentine and Transparent compounds facilitates an optimal layering of aesthetic restorations. The filler combination guarantees the desired chameleon effect, a natural opalescence and adapted fluorescence. Hybrisun nano can be used with common adhesive systems, e. g. N-Bond and C-Prime S plus. The combination with Hybrisun nano flow permits optimal application in all cavity classes.

Single package: Syringe 4,0 g; Minifill 250mg

Kit (3 syringe) A2 / A3 / A3,5 / N-Bond 5ml / C-Cid 3g / accessories

Kit (4 syringe) A1 / A2 / A3 / A3,5 / N-Bond 5ml / C-Cid 3g / access.

Kit (6 syringe) A1 / A2 / A3 / A3,5 / B2 / D3 / N-Bond 5ml / C-Cid 3g / access.  
(Shade combination at your discretion available on request)

Shades: Enamel: A1 / A2 / A3 / A3.5 / A4 / B1 / B2 / B3 / C2 / C3 / C4 / D3  
Dentin: A2 / A3 / A3.5 / B1 / B2 / B3 / C2 / D3  
Incisal transparent white-grey



# FILLING MATERIALS



## HYBRISUN nano flow

**HYBRISUN nano flow** is a novel flowable filling material and combines the typical properties of a flowable composite with the most recent findings of nanotechnology. With more than 74 % by weight, the total filler content of HYBRISUN *nano flow* is as high as that of conventional universal composites. HYBRISUN *nano flow* slightly moistens the cavity wall and flows well into the cavity in application. HYBRISUN *nano flow* shows a natural fluorescence in ultraviolet light and is used in the filling therapy for micro preparations and dental neck defects, extended fissure sealing, fixation and repair of composite and ceramic restorations as well as for applying the first filling layer in composite restorations. Due to a slightly thixotropic consistency, HYBRISUN *nano flow* does not drip and can be applied with high precision. The combinability with filling materials such as N-Fill and N-Bond permits an optimal application range for HYBRISUN *nano flow*. During polymerisation the shrinkage of the material is reduced to a minimum by the nano-particle enriched matrix. The finished restoration with HYBRISUN *nano flow* can be polished to high gloss and is resistant against abrasion. HYBRISUN *nano flow* is available in the most popular basic shades.

Single package:	Syringe 2,0 g
Kit	(4 syringe) A1 / A2 / A3 / A3,5 / N-Bond 5ml / C-Cid 3g / access. (Shade combination at your discretion available on request)
Shades: Enamel:	A1 / A2 / A3 / A3,5 / B2 / B3
Dentin:	A2 / A3

# FILLING MATERIALS



## HYBRISUN aesthetic

**HYBRISUN aesthetic** is the universal light curing Microhybrid-Composite for restorations in the anterior- and posterior tooth area. The optimal consistence and colour choice permits the individual anterior fillings in the layer technique as well as the occlusal posterior fillings. The filler combination, consisting of glass filler and ultra fine SiO<sub>2</sub>, is entirely coated with a reactive hydrophobic layer. This guarantees high restoration stability. The average size of the glass filler is 0.6 µm, rendering a high filler investment with optimal particle size distribution. The measured filler combination ensures a concise chameleon effect, a natural opalescence through the Rayleigh dispersion of the visible light and high gloss polish capability. These properties lend a natural aesthetic looking to the placed filling. Hybrisun aesthetic is X-ray opaque and available in a wide variety of shades.

Single package: Syringe 4,0 g; Minifill 250mg

Kit	(3 syringe) A2 / A3 / A3,5 / C-Bond 5ml / C-Cid 3g / accessories
Kit	(4 syringe) A1 / A2 / A3 / A3,5 / C-Bond 5ml / C-Cid 3g / access.
Kit	(6 syringe) A1 / A2 / A3 / A3,5 / B2 / D3 / C-Bond 5ml / C-Cid 3g / access. (Shade combination at your discretion available on request)
Shades: Enamel:	A1 / A2 / A3 / A3,5 / B2 / B3 / B4 / C2 / C4 / D3
Dentin:	A1 / A2 / A3 / A3,5 / B2 / B4 / C4 / D3
Incisal:	transparent white-yellow transparent white-grey



# FILLING MATERIALS



## HYBRISUN aesthetic flow

**HYBRISUN aesthetic flow** is a flowable light curing Microhybrid Composite which is X-ray opaque. HYBRISUN aesthetic flow is used in the filling therapy of micro preparations and defects of the tooth neck, the expanded occlusion of fissures, the fixation and repair of composite- and ceramic restorations as well as the placement of the first filling layer by composite restorations. HYBRISUN aesthetic flow has optimal flowable properties. Due to its thixotropic consistence the investment does not drip and has good stability.

That is why the HYBRISUN aesthetic flow is very accurate applicable to the point in the smallest cavities and undercuts and the perfect supplement for HYBRISUN aesthetic. The fine transparency of HYBRISUN aesthetic flow causes the placed fillings to blend in well with the surrounding natural tooth (chameleon effect) of the glass-filler investment. HYBRISUN aesthetic flow is available in the most popular basic shades. HYBRISUN aesthetic flow fulfils the highest demands in aesthetic, application range and economical working.

Single package: Syringe 2,0 g

Kit (4 syringe) A1 / A2 / A3 / A3,5 / C-Bond 5ml / C-Cid 3g / access.  
(Shade combination at your discretion available on request)

Shades: Enamel: A1 / A2 / A3 / A3,5 / B2  
Dentin: A2 / A3

# FILLING MATERIALS



## HYBRISUN molar

Light curing condensable posterior filling material

**HYBRISUN molar** is a light curing condensable filling material especially for posterior restoration. Due to the attuned filler combination, a very high filling degree of more than 67 % by volume is reached. This corresponds to a filling degree of more than 81 % by weight with conventional dental glass. The flexural strength of HYBRISUN molar is distinctly higher than the values of other universal composites. Therefore HYBRISUN molar is especially well suitable for the posterior tooth restoration. With this indication it is superior to the universal composites.

The high content of inorganic fillers and the special structure provide a stable consistency that prevents the mould from flowing and renders the material well condensable. This is achieved by means of the micro-morphological surface structure of the fillers. Their interlocking with each other under pressure causes HYBRISUN molar to be condensable.

HYBRISUN molar is X-ray opaque and applicable for fillings of class I, II and V, stump constructions, deciduous tooth restorations as well as for composite inlays in the posterior tooth area. HYBRISUN molar is not sticky to the instrument and can be used with metal matrix and wooden wedge. Its outstanding condensability and stability facilitate easy shaping of points of contact and occlusion surfaces.

Single package: Syringe 4,0 g; Minifill 250mg

Kit (3 syringe) A2 / A3 / A3,5 / C-Bond 5ml / C-Cid 3g / accessories  
Kit (4 syringe) A1 / A2 / A3 / A3,5 / C-Bond 5ml / C-Cid 3g / access.  
Kit (6 syringe) A1 / A2 / A3 / A3,5 / B2 / D3 / C-Bond 5 ml / C-Cid 3 g / access.  
(Shade combination at your discretion available on request)

Shades: Enamel: A1 / A2 / A3 / A3,5 / B2 / D3

# FILLING MATERIALS



## HYBRISUN MF

**HYBRISUN MF** is a light curing composite with a microfill bas. HYBRISUN MF is for restorations in the anterior tooth area, for small single surface fillings in the posterior

Tooth area as well as used in deciduous teeth. The particle size and distribution of inorganic filler with 0,05 to 0,005  $\mu\text{m}$  guarantees the high gloss polish capability of the filling. The organic layer on the fillers of HYBRISUN MF is water resistant and integrates fillers securely into the matrix. The fillers are optimal distributed in the matrix and affect slight water retention. This homogeneity is important for the high colour stability and abrasion resistance of the restoration. The measured dispensing and the optimal manufacturing technology are guarantors for a composite which has very good mechanical values of the plastic modeling consistency and good adaption to the cavity walls. HYBRISUN MF fluoresces like the natural tooth structures.

Single package:	Syringe 4,0 g
Kit (3 syringe)	A2 / A3 / A3,5 / C-BOND 5 ml / C-CID 3 g / accessories
(4 syringe)	A1 / A2 / A3 / A3,5 / C-BOND 5 ml / C-CID 3 g / accessories
(6 syringe)	A1 / A2 / A3 / A3,5 / B2 / D3 / C-BOND 5 ml / C-CID 3 g / access.
Shades Enamel:	A1 / A2 / A3 / A3,5 / B2 / B3 / C2 / D3
Dentin:	A1 / A2 / A3 / A3,5



## HYBRISUN-T

**HYBRISUN-T** is a light curing, temporary one-step filling material for all kinds of cavities and preparations. HYBRISUN-T contains Fluoride, which reduce the risk of secondary caries. The application of HYBRISUN-T is fast and easy and gains a high resistance after light curing. HYBRISUN-T is mechanically resistant immediately after curing. HYBRISUN-T is easy to remove.

Single packages:	Shade:
Syringe: 4,0 g	Universal

DENTAL PRODUCTS

GERMAN QUALITY FOR DENTISTRY

14

# FILLING MATERIALS

## Megacem Aqua-Set glass-ionomer filling cement

Megacem is suitable for the restorations in the cavities class III , V and minimal class I fillings, fissure fillings, restorations in deciduous teeth and for build up cores. It is available as water-mixed glass-ionomer cement for dental fillings. The shading of Megacem with 6 basic colours makes restorations with high aesthetics and an economic inventory possible. Megacem guarantees a strong adhesion to natural tooth Enamel and Dentin. Megacem is formulated for low solubility and low acidity.



Single package:	1 x powder 20 g
Assortment packages :	1 x powder 20 g 1 x plastic bottle, 1 x mixing pad 1 x spatula
Shades:	A 1 / A2 / A3 / A3,5 / B2

## Megacem powder / liquid glass-ionomer filling cement

Megacem is a glass-ionomer cement in powder and liquid for dental fillings. The application and shades are the same like Megacem aqua-set.

Single package :	1 x powder 20 g 1 x liquid 10 ml
Assortment packages:	1 x powder 20 g, 1 x liquid 10 ml 1 x spatula, 1 x mixing pad
Shades:	A1 /A2/A3/A3,5/ B2



15



# ADHESIVE SYSTEMS

Mega-Physik provides high-class adhesive systems for the optimal filling therapy. With C-Cid the natural tooth enamel can be etched or the "Total Etch Technique" performer. C-Bond, C-Bond ceram and N-Bond as light curing dental adhesive guarantees a high mechanical bonding for the filling on natural Enamel. The conditioning of enamel and dentin can take place in one process with the universal prime and bond C-Prime S plus.



## C-Cid

**C-Cid** is an etching gel for the adhesive filling therapy, consisting of a glycerine gel with a 37% phosphoric acid contents. C-Cid is also suitable for the total etching technique.

Single package: Syringe 3.0 g ; Syringe 5.0 g



## C-Bond

**C-Bond** is a light curing dental adhesive and is used in the filling therapy as adhesive connection as well as bonding during the repair of resin-, ceramic, crown- and bridge works.

Single package: Bottle 5 ml



## N-Bond

**Dental adhesive by nano-concept**

**N-Bond** is a light curing and with nano-particles reinforced dental adhesive. By adding nano-particles, the properties are improved without increasing the viscosity of the adhesive. N-Bond is easy to apply and moistens the tooth cavity for excellent adhesive bonding.

The low polymerisation shrinkage reduces the marginal gap formation in filling therapy to a minimum. N-Bond is used in fissure sealing and adhesive fixation.

Single package: Bottle 5 ml



## C-Prime S plus

**C-Prime S** is a light curing ethanol based prime & bond dental adhesive for the Enamel- and Dentine adhesion used in the filling therapy. C-Prime S plus is used in the direct, light curing composite- and compomer filling therapy, by indirect ceramic- and composite restorations (inlay, onlay, veneers) as well as bonding during the repair of resin-, ceramic-, crown- and bridge works. The ethanol base of C-Prime S plus ensures a fast and secure use and provides the ideal bonding of the composite (Wet-Bonding-Technique).

Single package: Bottle 5 ml

DENTAL PRODUCTS

GERMAN QUALITY FOR DENTISTRY

16

# ADHESIVE SYSTEMS



## C-Bond ceram

**C-Bond ceram** is a further development of C-Bond and enhance significant the excellent properties of C-Bond reducing the shrinkage by a higher filler concentration and improved mechanically adhesion.

Single package: Bottle 5 ml



## C-Prime SE

**C-Prime SE** is a one-step self-etching, light curing Prime and Bond (7th generation) for direct application. The steps etching, rinsing, drying, priming and bonding are replaced by the direct application of C-PRIME SE succeeded by photopolymerization. C-PRIME SE provides high bond strength to natural enamel and dentin. This ensures more efficient compound between restorative material and tooth structure. C-PRIME SE provides secure adhesion to various material such as ceramic, zircon a metal.

Single package: Bottle 5 ml



## Kerasil

**Kerasil** is a ready for use resin-coating (SILAN) material for Ceramic and Metal surfaces to enable a chemical compound to organic structures like Composites.

Single package: Bottle 3 ml



## C-FLUORINE

**C-FLUORINE** is a pyretic agent in gel format for roughening of Ceramic surfaces of compositions e.a. ceramic veneers, crowns and inlays

Single package: Syringe 3 ml



17

# CEMENTS

## Megafix Aqua-Set

**Megafix** is suitable for the cementing of crown-and bridge works, inlays and veneers. It is available as water-mixed **glass-ionomer cement** for dental fixations. Megafix can be used for luting as under filling and fixation material. Megafix joins a very low film thickness with a high compressive strength. Megafix guarantees a strong adhesion to natural tooth Enamel and Dentine with Fluoride release. The cement is formulated for low solubility and low acidity in the mouth.

Single package:	1 x powder 20 g
Assortment packages:	1 x powder 20 g, 1 x plastic bottle, 1 x mixing pad 1 x spatula



## Megafix powder / liquid

**Megafix** is a glass-ionomer cement in powder and liquid for dental fixations. The application is the same like Megafix aqua-set.

Single package:	1 x powder 20 g 1 x liquid 10 ml
Assortment packages:	1 x powder 20 g, 1 x liquid 10 ml, 1 x spatula, 1 x mixing pad



## C-CEMENT flow

**C-CEMENT** flow is a thin fluent dual curing microhybrid **composite cement** for fixation of veneers, inlays, crown and bridge artworks. It consists of base and catalyst filled in an auto mix double chambered syringe which allows a simplified direct application. C-CEMENT flow is X-ray opaque and has a high filler content. C-CEMENT flow is also suitable for the fixation of brackets and orthodontic application. The universal shade allows esthetic fixation of the restoration.

Single package:	double-chambered syringe 2 x 4,0 g
-----------------	------------------------------------

DENTAL PRODUCTS

GERMAN QUALITY FOR DENTISTRY

18

# TRAY MATERIALS



## MP-TRAY

**MP-Tray** is a light curing tray material for the fabrication of individual custom trays with extremely high dimensional stability. The composite resin is presented in form of contoured wafers in the colours pink, blue and transparent (natural).

The simple processing of MP-Tray with a long modelling- and processing time makes the efficient production of individual custom trays in the laboratory and dental cabinet possible. The universal form and the consistent thickness of 2,2 mm of MP-Tray allow the production of upper and lower trays. The grip can be made from the rest of the material. After modulation MP-Tray must be cured in a light curing unit, e. a. MEGALIGHT, for 5 minutes. The consistently high quality of the material guarantees a minor polymerisation shrinkage (below 2 vol. %) and excellent form stability.

Single package:	Box with 50 pieces
Assortment packages:	Carton with 2 boxes with 50 pieces
Shades:	pink, blue and transparent

## MP-TRAY base plate

**MP-Tray** material is also as light curing base plate available. The thickness of the contoured wafers is only 1,4 mm. MP-Tray base plates wafers are suitable for fabrication of biteplates and bite templates. The slight transparency of the tray allows the graceful work with marked models. After modulation, MP-Tray plate must be cured in a light curing unit, e. g. MEGALIGHT, for 5 minutes approx. The consistently high quality of the material guarantees a minor polymerisation shrinkage and outstanding form stability.

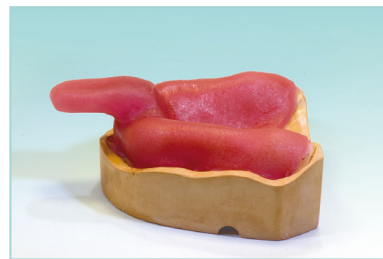
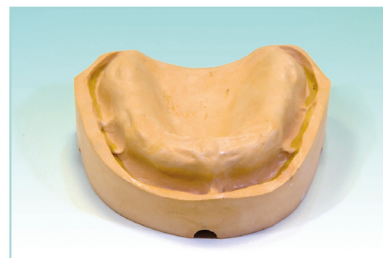
Single package:	Box with 50 pieces
Shades:	pink

19





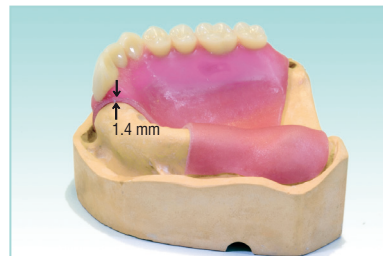
# TRAY MATERIALS



The procedure of fabrication an individual tray is easy and without problem. Remove the fleece cover from the wafer, adapt MP-Tray onto the blocked-out plaster model, which has been isolated previously with an Alginate solution (Lisol) and cut the rim with a sharp knife or scalpel. The excessive material can be used to form a handle to be fixed onto the tray. Now the crowned artwork must be cured for 5 minutes in a suitable light polymerization unit like DENTALUX-2 (capacity 2 tray) or DENTALUX-4 (capacity 4 tray.) After curing remove the tray from the plaster and cure the reverse side of the tray additional 3 minutes because of the increased material thickness at the handle. A slight inhibition film caused by atmospheric oxygen during the curing process can be removed easily with a tissue moistened with Megaclean, an eudermic solution. The custom tray is now ready for use.



## Light curing wafers for base plates



MP-Tray is also available in 1,4 mm thickness and can be used for fabrication of biteplates and bite templates. The wafers are slightly transparent to recognize marks on the plaster model.

The base plate is adapted onto the plaster model by the same procedure as described previously. After modulation the base plate must be cured in a light polymerisation unit e. g. DENTALUX-4 or DENTALUX-2 for 5 minutes approx.

The pictures show the setting of teeth on a temporary base for an artificial denture.

DENTAL PRODUCTS

GERMAN QUALITY FOR DENTISTRY

20

# DENTURE BASE MATERIALS

## Licryl-Press, Licryl-Cast, Licryl-Repair

is a selected assortment of denture base material with excellent quality and superior workability. The universal basic colour of the assortment make the denture base material suitable to combine heat- and cold curing resin in the denture. The powder is available in clear, pink and blue-pink veined. Additional shades are available on request. Optimal package sizes allow effective inventory maintenance. The denture base material has a high form – and Colour stability with an exact fitting and easy polishing Quality of the denture base.



## Licryl-Press

**Licryl-Press** Is a powder and liquid heat cured denture base material for the fabrication of dentures using a press process. It has a flowable and plastic consistency after mixing. The Heat polymerizing takes place under pressure in a water Bath or in a corresponding polymerizing unit, depending on the method of process in 30 up to 180 minutes

Package: Powder 500 g / 1000 g  
Liquid 500 ml / 1000 ml  
Shades: clear / pink / blue-pink veined

## Licryl-Cast

**Licryl-Cast** is a powder and liquid cold curing denture base material for the fabrication of complete and partial dentures, relining of dentures and repairs. Licryl-Cast can be cast and modeled. After the mixing process Licryl-Cast can be cast for app. 3 minutes, the modeling time takes another 3 minutes. The polymerization takes place under pressure by 2-3 Mpa within 7 minutes.

Package: Powder 500 g / 1000 g  
Liquid 500 ml / 1000 ml  
Shades: clear / pink / blue-pink veined



21



# DENTURE BASE MATERIALS

## Licryl-Repair

**Licryl-Repair** is a powder and liquid self-cure resin for repairs. The processing time of the mixed materials is up to 6 minutes. At a temperature of 21°C Licryl-Repair polymerizes in approximately 13 minutes.



Package: Powder 500 g / 1000 g  
Liquid 500 ml / 1000 ml  
Shades: clear / pink / blue-pink veined

## Liseal- ULC universal

**Liseal- ULC** is a light cured surface varnish for dentures, repairs and orthodontic applications. The sealing stabilizes the surface, is abrasion resistant and high-gloss. Liseal-ULC is applied preferably with a brush in a thin layer. After application Liseal ULC must be cured in a UV light box preferably Dentalux-4 in 5 minutes or Dentalux-4L in 2-3 minutes.



Single package: bottle 20 ml with brush insert  
bottle 30 ml with dropping outlet



## Liseal-NLC nano concept

**Liseal-NLC** is a light cured surface varnish reinforced by nano particles. These effect a higher scratch resistance and higher gloss. Liseal-NLC is designed for sealing acrylic, composite, plastic and ceramic\* surfaces, in denture components, plastic bite guard splints, orthodontic and provisional appliances. Liseal-NLC is applied with a brush in a thin layer. After application Liseal-NLC must be cured in a UV light box preferably Dentalux-4 in 5 minutes or Dentalux-4L in 2-3 minutes.

\*) subsequent to pre-treatment with KERASIL (Silan)  
Single package: bottle 20 ml with brush insert  
Bottle 30 ml with dropping outlet

DENTAL PRODUCTS

GERMAN QUALITY FOR DENTISTRY

22

# MODELING RESIN

## LIMOD-P/L

**LIMOD-P/L** is a powder and liquid resin intended to use for modeling secondary parts, inlays and crowns, to fixate solder spots as well as individual post-core structures. LIMOD-P/L can be applied with a brush, as a thin ductile leaky paste and can be manipulated in this kneadable condition. LIMOD-L/C provides an excellent impression accuracy level, is polishable to high gloss and burns out residue-free.

Single package: powder 80 g or 500 g  
Liquid 80 ml or 500 ml



## LIMOD-LC / LIMOD-LC flow

**LIMOD-LC/LC flow** are ready-to-use light curing contouring resin filled in syringes. It is designed for contouring of Inlays, Onlays, Crowns and for fixation of solder points and is helpful by the preparations of metal cast dentures and for blocking out of undercuts.

**LIMOD-LC flow** has optimal flowable properties. Due to its thixotropic consistency the contouring work does not drip down and has excellent stability. It can be used for contouring of cast claps, adhesive bridges, Implant abutments and precision attachments. LIMOD LC/LC flow can be applied directly from the syringe and can be cured in a standard light box (UV and/or blue light) like DENTALUX-4 or DENTALUX-4L and it burns out residue free. The cured LIMOD-LC/LC flow can be combined with any standard or light cured wax.

Single package: LIMOD-LC syringe 3 g  
LIMOD-LC flow syringe 3 g

Assortment package: 1 x LIMOD-LC 3g  
3 x LIMOD-LC flow 3g



23



# AUXILIARIES



## LISOL

**LISOL** is an alginate insulation agent for separation of plastic parts (self polymerisation / light cured) from plaster casts. It is used to separate individual trays and base plates from plaster cast as well as in Orthodontics. LISOL soaks quickly into the plaster-model and gives a very efficient and thin protection insulation.

Package: bottle 500 ml



## LICLEAN

**LICLEAN** is an alcoholic cleaning agent designed to remove the oxygen inhibition layer on surfaces of light cured resins. LICLEAN include eudermic ingredients which make it also suitable for hand cleaning.

Package: bottle 300 ml  
bottle 5 x 300 ml + dispenser (eco pack)



## LIFIN

**LIFIN** serves as cleaning agent for surface treatment of dentures and resin surfaces. By use of LIFIN the surface tension will be reduced and receives a pleasant scent and flavor. LIFIN can be applied in concentrated form or with water diluted using a brush and has to be rinsed with water after treatment.

Package: bottle 500 ml



## LIANTIWAX

**Liantiwax** is a detergent concentrate based on tensides for Removal of wax- and grease residues. Liantiwax can be added to the water in blanching devices or directly diluted with water at the ratio of 1 : 500

Package: bottle 500 ml

DENTAL PRODUCTS

GERMAN QUALITY FOR DENTISTRY

24

# CROMALUX

CROMALUX/MEGALUX are halogen curing light units for polymerisation of light curing dental material, which are characterised by high light intensity and reliability. CROMALUX 75 is available in 3 different types.

## CROMALUX 75

Basic model

The CROMALUX 75 is light and compact with a weight of 2.300 g. The handpiece weighs only 220 g. It is easy to handle and still highly comfortable to use. Therefore the CROMALUX 75 is essential in every dental practise.

The polymerisation time, 20 s, 40 s or continuous operation, is adjusted by a keypad and started or ended by pressing the start/stop push button at the handpiece. REF 7036.B01



## CROMALUX 75 C

Basic model with integrated light measuring unit by LED, calibrated for MEGA-PHYSIK light tips. For measuring the light tip must be placed flat on the optical sensor. The maximum measured value is indicated by 3 light-emitting diodes.

LED green: The light intensity is stronger than 400 mw/cm<sup>2</sup>  
LED yellow: The light intensity is between 200 and 400 mw/cm<sup>2</sup>  
LED red: The light intensity is insufficient.  
REF 7036.C01



## CROMALUX 75 R

Basic model with integrated radiometer. The light intensity is indicated digitally in mw/cm<sup>2</sup>.

On the strength of the exact signal of the light intensity, the user decides whether the light intensity is adequate for the intended treatment or a longer exposure time might be necessary. REF: 7036.R01



### Technical data

Mains voltage: 230V / 110V  
Power consumption: 105 W  
Spectrum: 400–500 nm (blue light)  
Light intensity: 650–800 mw/cm<sup>2</sup>  
Halogen bulb: 12V/75W spot-adjusted  
Polymerisation time: 20 s / 40 s/ continuous  
acoustic signal every 10 s



25

# CROMALUX economic

## CROMALUX E

Halogen curing light unit for the polymerisation of light curing dental material.

Simple design, which is among others also used for adhesive technology in the field of jewellery- and acoustic branch.

By a powerful cooling fan continuous operation can be effected. An acoustic signal every 10 s shows the polymerisation time.

Mains voltage: 230V / 110V  
Power consumption: 95 W  
Halogen bulb: 12V/75W spot-adjusted  
Spectrum: 400–500 nm (blue light)  
Polymerisation time: continuous operation,  
acoustic signal every 10 s

REF 7050.B01



## CROMALUX E plus

Halogen curing light unit for the polymerisation of light curing dental materials.

Simple design, but equipped with a keypad for time selection.

Main supply: 230V / 110V  
Power consumption: 95 W  
Halogen bulb: 12V/75W spot-adjusted  
Spectrum: 400–500 nm (blue light)  
Polymerisations time: 20s / 40 s/ continuous  
acoustic signal every 10 s

REF 7050.P01



# MEGALUX soft-start

## MEGALUX soft start

Halogen curing light unit with a soft start mode for the polymerisation of light curing filling material. The filling material is carefully pre-polymerised by low light intensity in order to avoid stress in the dental material.

Mains voltage: 230V / 110V  
Power consumption: 105 W  
Halogen bulb: 12V/75W spot-adjusted  
Spectrum: 400–500 nm (blue light)  
Polymerisation time:  
Soft start mode: 10 s (soft) + 30 s  
Standard mode: 20 s / 40 s/ continuous  
acoustic signal every 10 s

REF 7044.S01



## MEGALUX soft-start R

MEGALUX soft start but with a built-in radiometer for measuring the light intensity.

Mains voltage: 230V / 110V  
Power consumption: 105 W  
Halogen bulb: 12V/75W spot-adjusted  
Spectrum: 400–500 nm (blue light)  
Polymerisation time:  
Soft start mode: 10 s (soft) + 30 s  
Standard mode: 20 s / 40 s/continuous  
acoustic signal every 10 s

Measuring range: 100-1999 mw/cm<sup>2</sup>

REF 7044.R01





# MEGALUX fast-cure

## MEGALUX fast-cure

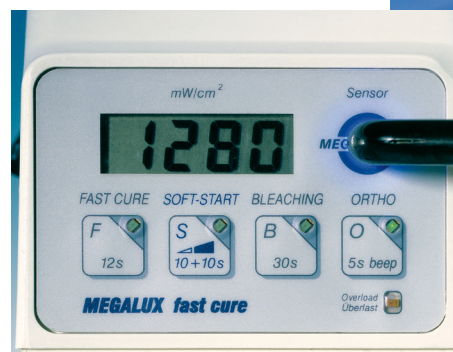
Halogen curing light unit with soft start mode, radiometer and a focussing light tip.

The use of the light tip FOCUS 160 guarantees a light intensity of approx. 1100 mw/cm<sup>2</sup>, which is favourable for orthodontics.

The ortho function at 5 s intervals is useful for fixing brackets. The timer of 30 s is suitable for prophylaxis and bleaching.

Mains voltage: 230V / 110V  
 Power consumption: 110 W  
 Halogen bulb: 12V/75W spot-adjusted  
 Spectrum: 400–500 nm (blue light)  
 Polymerisation time:  
 Soft start-mode: 10 s (soft) + 10 s  
 Fast cure mode: 12 s  
 Bleaching mode: 30 s  
 Ortho-mode: continuous,  
 acoustic signal every 5 s  
 Light tip: FOCUS 160, 12,5/8mm

REF 7055.R01



## CROMATEST

Visible curing light meter for **MEGA-PHYSIK** halogen curing light units.

Measurement range: 100–1999 mW/cm<sup>2</sup>  
 Capacity: 0,2 W  
 Power supply: 9V battery

REF 7041.01

# Acessories, Spare parts

## Optional light tips

The light tips consist of a bundle with parallel glass fibres with an additional black melt-on glass coating. This prevents the highly intensive light from coming out sideways even if there are some defective glass fibres.

ST08	Standard 8mm/60°	REF 7000.002.SB
UN10	Universal 10mm/60°	REF 7000.037.SB
OC11	Occlusal 11mm/60°	REF 7000.038.SB
F160	FOCUS 160, 12/8mm/60°/90mm	REF 7000.026.SB
FA12	Facial 12,5mm/0°/70mm	REF 7000.039.SB
LT83	Layer Technology 8/3mm/60°/90mm	REF 7000.044.SB
LT84	Layer Technology 8/4mm/90°/90mm	REF 7000.041.SB





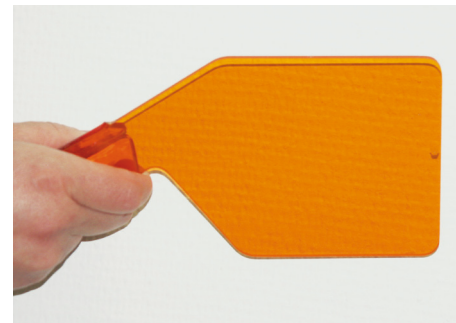
# Eye protection

## Eye protection

Eye protection shield UNIVERSAL  
for light tips 8mm–11mm  
REF 7000.027.00



Eye protection shield straight  
REF 7000.016.00



Eye protection shield curved  
REF 7000.017.00



Safety goggles  
REF 7000.018.00



## Spare bulb

Halogen bulb Mega-Physik 12V/75 Watt  
spot-adjusted  
REF 7000.001.MP



DENTAL PRODUCTS

GERMAN QUALITY FOR DENTISTRY

30

# CROMALUX LED



## CROMALUX LED multi-wave

The solution for polymerisation all kind of light cured composites not only camphorquinon-based materials.

Light intensity:

1600 mW/cm<sup>2</sup> with Turbo tip FOCUS 160

2400 mW/cm<sup>2</sup> with Turbo tip FOCUS 170

Wavelength range:

390 – 490 nm comparable with the spectrum of halogen light.

Operation mode:

**Soft-start** in the first 5 s, followed by full power. To activate the light press the start button temporarily (shorter than 1 s)

**Fast-cure** starts with full power. To activate the light, press the start button for more than 1 s.

20 s, acoustic signal every 5 s.

Timer:

REF

7037.B04

## CROMALUX LED Fast-cure

Light intensity:

2000 mW/cm<sup>2</sup> with Turbo Light Tip FOCUS 160

3000 mW/cm<sup>2</sup> with Turbo Light Tip FOCUS 170

Wavelength range:

430 – 490 nm

Operation mode:

**Soft-start** in the first 5 s, followed by full power. To activate the light just press the start button temporarily (shorter than 1 s)

**Fast-cure** starts with full power. To activate the light, press the start button for more than 1 s.

20 s, acoustic signal every 5 s.

Timer:

REF

7037.B03



31



# CROMALUX LED

## CROMALUX LED ortho 3000



Light intensity: 2200 mW/cm<sup>2</sup> with Turbo tip FOCUS 160  
3300 mW/cm<sup>2</sup> with Turbo tip FOCUS 170  
Wavelength range: 430 – 490 nm  
Operation mode: **Fast-cure** starts with full power  
Timer: 60 s, acoustic signal every 5 s.  
REF 7037.C03

## CROMALUX LED 1200



Light intensity: 1400 mW/cm<sup>2</sup>  
Wavelength range: 430 – 490 nm  
Operation mode: **Soft-start** in the first 5 s, followed by full power  
To activate the light just press the start button  
Temporarily (shorter than 1s)  
**Fast-cure** starts with full power. To activate the light  
Press the start button for more than 1 s  
Timer: 20 s, acoustic signal every 5 s.  
REF 7037.B02

## CROMALUX LED UVA



Suitable for polymerisation of UV-based composites and sealants such as Light Cure Fluorescing Filled Sealants.  
Light intensity: 1500 mW/cm<sup>2</sup> with Turbo tip FOCUS 160  
2100 mW/cm<sup>2</sup> with Turbo tip FOCUS 170  
Wavelength range: 380 – 430 nm  
Operation mode: **Fast-cure** starts with full power  
Timer: 60 s, acoustic signal every 5 s.  
REF 7037.C02

### General Technical Data

Mains voltage: 100 – 240 VAC, 50-60 Hz  
Number of curing cycles  
Full charged battery: 240 x 10 s  
Charging time: 2,5 h

DENTAL PRODUCTS

GERMAN QUALITY FOR DENTISTRY

32

# DENTALUX

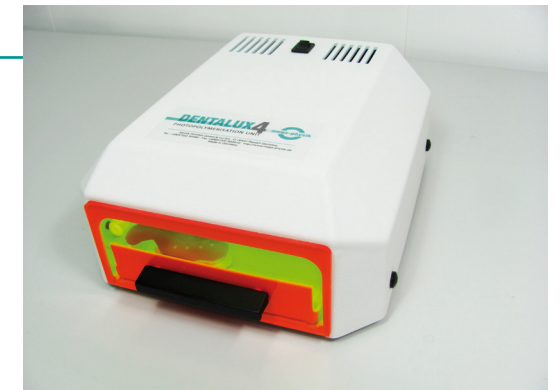
Light curing unit for polymerisation of e.g. MP-TRAY light curing tray material, Liseal ULC, Liseal NLC sealing lacquer and other light curing materials in the range of UVA or blue light. DENTALUX units are supplied with a timer for controlling the polymerisation time.

## DENTALUX-4

DENTALUX-4 is equipped with 4 fluorescent lamps.  
The unit can take on 4 models, which can be cured at the same time.

Mains voltage: 230 V/ 50 Hz  
Power consumption: 40 W  
Fluorescent lamps: 4 UVA lamps 320-390 nm  
4 blue light lamps 400-500 nm  
Polymerisation time: 5 minutes (timer)

REF 7040.20 UVA  
REF 7040.30 blue



## DENTALUX-2 Mini

DENTALUX-2 Mini is equipped with 2 fluorescent lamps.  
The unit can take on 2 models, which can be cured at the same time.

Mains voltage: 230 V/ 50 Hz  
Power consumption: 22 W  
Fluorescent lamps: 2 UVA lamps 320-390 nm  
2 blue light lamps 400-500 nm  
Polymerisation time: 5 minutes (timer)

REF 7040.00 UVA  
REF 7040.10 blue



### Spare parts:

Fluorescent lamps 9 W UVA REF 7040.70  
Fluorescent lamps 9 W blue REF 7040.71

Spare drawer for DENTALUX-4 REF 7040.73  
Spare drawer for DENTALUX-2 Mini REF 7040.72

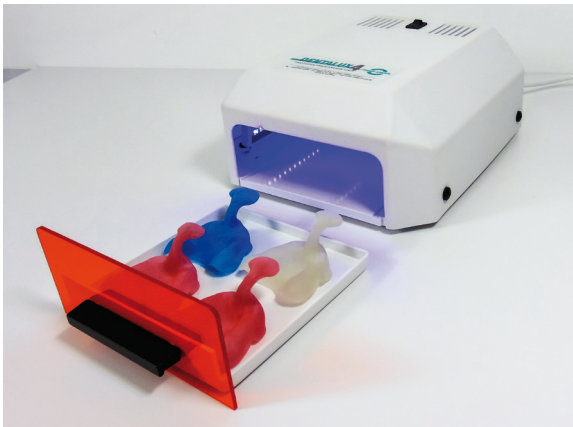
33

# DENTALUX fast-cure

Light curing units for photo-polymerisation of custom tray materials like MP-TRAY, Base Plates, sealing varnish like Liseal ULC or Liseal NLC and other light curing materials which react with UV-A light. The units are equipped with a fixed timer to control the curing time.

Advantages over conventional lights: Outstanding Less Shrinkage  
Outstanding less curing time

## DENTALUX-4 fast-cure



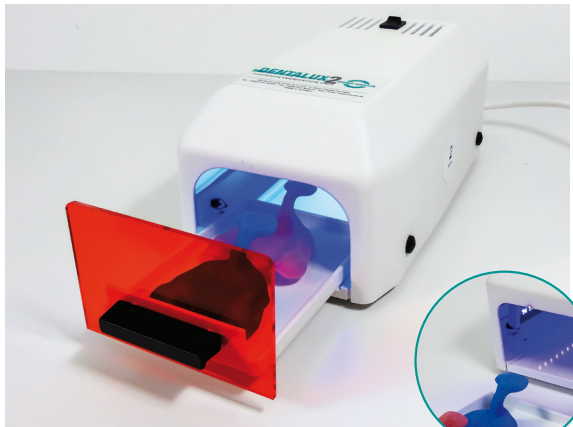
DENTALUX-4 fast-cure is equipped with 48 pcs  
High-power light-emitting-diodes  
Capacity of the drawer: 4 models

Supply voltage: 200-240 VAC/50-60 Hz  
REF 7041.20  
Supply voltage: 100-120 VAC/50-60 Hz  
REF 7041.21

Power consumption: 32 W  
Wavelength: 360-410 nm  
Curing time: 60 Seconds

Spare drawer for DENTALUX-4  
REF 7040.73

## DENTALUX-2 fast-cure



DENTALUX-2 fast-cure is equipped with 24 pcs  
High-power light-emitting-diodes  
Capacity of the drawer: 2 models

Supply voltage: 200-240 VAC/50-60 Hz  
REF 7041.00  
Supply voltage: 100-120 VAC/50-60 Hz  
REF 7041.01

Power consumption: 18 W  
Wavelength: 360-410 nm  
Curing time: 60 Seconds

Spare drawer for DENTALUX-2  
REF 7040.72

# NOTES



*For more information, contact:*

---

GERMAN QUALITY FOR DENTISTRY

**MEGA-PHYSIK GMBH & CO KG**  
D-76437 Rastatt / Germany  
Industriestraße 36  
Tel. : ++49 7222 9046-0  
Fax : ++49 7222 9046-10  
info@mega-physik.com  
www. mega-physik.com

